

AMERICAN RIVER FLOOD CONTROL DISTRICT

RESOLUTION NO. 2022-16

PROCLAIMING A LOCAL EMERGENCY PERSISTS, RE-RATIFYING THE COVID-19 STATE OF EMERGENCY, AND RE-AUTHORIZING REMOTE TELECONFERENCE MEETINGS OF AMERICAN RIVER FLOOD CONTROL DISTRICT PURSUANT TO THE RALPH M. BROWN ACT.

WHEREAS, the AMERICAN RIVER FLOOD CONTROL DISTRICT is committed to preserving and nurturing public access and participation in meetings of the Board of Trustees; and

WHEREAS, all meetings of the AMERICAN RIVER FLOOD CONTROL DISTRICT are open and public, as required by the Ralph M. Brown Act (Gov. Code, §§ 54950 – 54963) (“Brown Act”), so that any member of the public may attend, participate, and watch the District’s legislative body conduct its business; and

WHEREAS, Assembly Bill 361 added Government Code section 54953(e) to make provisions for remote teleconferencing participation in meetings by members of a legislative body, without compliance with the requirements of Government Code section 54953(b)(3), subject to the existence of certain conditions; and

WHEREAS, a required condition is that a state of emergency is declared by the Governor pursuant to Government Code section 8625, proclaiming the existence of conditions of disaster or of extreme peril to the safety of persons and property within the state caused by conditions as described in Government Code section 8558; and

WHEREAS, a proclamation is made when there is an actual incident, threat of disaster, or extreme peril to the safety of persons and property within the jurisdictions that are within the District’s boundaries, caused by natural, technological, or human-caused disasters; and

WHEREAS, it is further required that state or local officials have imposed or recommended measures to promote social distancing, or, the legislative body meeting in person would present imminent risks to the health and safety of attendees; and

WHEREAS, the Board of Trustees previously adopted a Resolution, number 2021-06 on October 8, 2021, finding that the requisite conditions exist for the District to conduct remote teleconference meetings without compliance with paragraph (3) of subdivision (b) of section 54953; and

WHEREAS, as a condition of extending the use of the provisions found in Section 54953(e), the Board of Trustees must reconsider the circumstances of the state of emergency that exists in the District, and the Board of Trustees has done so; and

WHEREAS, such conditions persist in the District, specifically, the March 4, 2020 State of Emergency Proclamation remains active in California due to the threat of COVID-19; and

WHEREAS, the Board of Trustees does hereby find that the ongoing risk posed by the highly transmissible COVID-19 virus has caused, and will continue to cause, conditions of peril to the safety of persons within the District that are likely to be beyond the control of services, personnel, equipment, and facilities of the District; and

WHEREAS, as a consequence of the local emergency persisting, the Board of Trustees does hereby find that the District shall continue to conduct its meetings without compliance with paragraph (3) of subdivision (b) of Government Code section 54953, as authorized by subdivision (e) of section 54953, and that the Board shall comply with the requirements to provide the public with access to the meetings as prescribed in paragraph (2) of subdivision (e) of section 54953; and

WHEREAS, all meeting agendas, meeting dates, times, and manner in which the public may participate in the public meetings of the District and offer public comment by telephone or internet-based service options including video conference will continue to be posted on the District website and physically outside of the District office.

NOW, THEREFORE, THE BOARD OF TRUSTEES OF AMERICAN RIVER FLOOD CONTROL DISTRICT DOES HEREBY RESOLVE AS FOLLOWS:

Section 1. Recitals. The Recitals set forth above are true and correct and are incorporated into this Resolution by this reference.

Section 2. Affirmation that Local Emergency Exists. The Board has reconsidered the conditions of the state of emergency and proclaims that a local emergency persists throughout the District because the high risk of transmissibility of COVID-19 continues to pose an imminent risk to the safety of persons in the District.

Section 3. Re-ratification of Governor's Proclamation of a State of Emergency. The Board hereby ratifies the Governor of the State of California's Proclamation of State of Emergency, effective as of its issuance date of March 4, 2020.

Section 4. Remote Teleconference Meetings. District staff are hereby authorized and directed to take all actions necessary to carry out the intent and purpose of this Resolution including, conducting open and public meetings in accordance with Government Code section 54953(e) and other applicable provisions of the Brown Act.

Section 5. Effective Date of Resolution. This Resolution shall take effect immediately upon its adoption and shall be effective until the earlier of (i) October 14, 2022, or such time the Board of Trustees adopts a subsequent resolution in accordance with Government Code section 54953(e)(3) to extend the time during which the District may continue to teleconference without compliance with paragraph (3) of subdivision (b) of section 54953.

PASSED AND ADOPTED by the Board of Trustees of AMERICAN RIVER FLOOD CONTROL DISTRICT, this _____ day of _____, 2022, by the following vote:

AYES:

NOES:

ABSENT:

ABSTAIN:

August 12, 2022
Sacramento, California

In Compliance with CA Assembly Bill 361 the Board of Trustees of the American River Flood Control District met in regular session at 11:00 a.m. on Friday, August 12, 2022 by teleconference. In attendance were Trustee Shah, Trustee L'Ecluse, Trustee Vander Werf and Trustee Johns. Trustee Holloway was absent. Trustee Shah presided. Trustee Vander Werf arrived during item number 4. Also present from the District were General Manager (GM) Tim Kerr, Superintendent Scott Webb, Legal Counsel Kim Lucia, Legal Counsel Rebecca Smith and Office Manager Malane Chapman. Two members of the public were present.

Item No. 1 Resolution No. 2022-15; Proclaiming a Local Emergency Persists, Re-Ratifying the COVID-19 State of Emergency, and Re-Authorizing Remote Teleconference Meeting of American River Flood Control District Pursuant to the Ralph M. Brown Act: On a motion by Trustee Holloway seconded by Trustee Vander Werf, the Board unanimously approved this item.

Roll Call Vote:

Trustee L'Ecluse:	AYE	Trustee Johns:	AYE
Trustee Vander Werf:	ABSENT	Trustee Shah:	AYE

Item No. 2 Public Comments on Non-Agenda Items: Bill Farrell informed the Board of the unkept conveyance that hasn't been maintained for about 6 years. GM Kerr mentioned that the conveyance was maintained by the City of Sacramento and that he will reach out to city utilities to see about getting it cleared.

Item No. 3 Approval of Consent Agenda: On a motion by Trustee Johns seconded by Trustee L'Ecluse, the Board unanimously approved items 3a) Minutes of Regular Meeting on July 8, 2022, 3b) Approval of Report of Investment Transactions June 2022 (City Pool, LAIF, River City) and Treasurer's Certification, 3c) District Financial Reports: Statement of Operations (July 2022) and Cash Flow Report, 3d) Correspondence: Fiscal Year 2021-2022 Audit Engagement Letter

Roll Call Vote:

Trustee L'Ecluse:	AYE	Trustee Johns:	AYE
Trustee Vander Werf:	ABSENT	Trustee Shah:	AYE

Items No. 4 Accounts Payable and General Fund Expenses (June 2022): Trustee L'Ecluse inquired about payments to Hunt & Sons and Nordic Industries, Inc. Following explanation by staff and on a motion by Trustee L'Ecluse seconded by Trustee Johns, the Board unanimously approved payments on the Schedule of Accounts Payable (July 2022) of \$233,430.17 and General Fund Expenses of \$112,662.83 (total aggregate sum \$346,093.00).

Roll Call Vote:

Trustee L'Ecluse:	AYE	Trustee Johns:	AYE
Trustee Vander Werf:	AYE	Trustee Shah:	AYE

At 11:07 a.m. the Trustees met in closed session with District Counsel Lucia and District Counsel Smith

Item No. 5 Conference with Legal Counsel – Personnel: Government Code 54957 – General Manager’s Annual Performance Evaluation

The Trustees returned to open session at 12:20 p.m.

Legal Counsel Lucia reported out that the Board discussed a COLA increase of 4% and a merit increase of 1%, bringing the GM’s salary to \$192,104.64 plus longevity bonus of \$1000. On a motion by Trustee Shah seconded by Trustee L’Ecluse, the Board unanimously approved the GM’s 2022-2023 salary.

Roll Call Vote:

Trustee L’Ecluse:	AYE	Trustee Johns:	AYE
Trustee Vander Werf:	AYE	Trustee Shah:	AYE

Item No. 6 Nepenthe Homeowners Association – Property Boundary Survey: GM Kerr briefed the Board on the possibility of splitting the costs for a property boundary survey. GM Kerr suggested that Nepenthe Homeowners Association pick which of the two companies presented to the District. On a motion by Trustee Shah seconded by Trustee Johns, the Board unanimously approved the cost share for Task 1 only using one of the two companies presented.

Roll Call Vote:

Trustee L’Ecluse:	AYE	Trustee Johns:	AYE
Trustee Vander Werf:	AYE	Trustee Shah:	AYE

Item No. 7 Administrative Staff Reports:

a) *General Manager Tim Kerr reported on the following:*

- General Manager’s July Meeting Summary;
- Arcade Creek Erosion Repair Status;
- USACE Lower American River Erosion Protection;
- Lathrop Way Encampment Update;
- By-District Election Update;
- District Staffing – New Hires;
- Hydrologic Conditions: Folsom Lake is 54% of total capacity with an outflow of 4,151 cfs. The gauge at I Street Bridge shows a water surface elevation of 7 feet above sea level;
- Next Board Meeting is scheduled for September 9, 2022

b) *Legal Counsel Rebecca Smith:* Resolution has been sent to the City, waiting on the injunction to pass before the District will be supported with resources.

c) *Office Manager Malane Chapman:* Nothing further to report.

Item No. 8 Operations and Maintenance Staff Reports:

Superintendent Scott Webb:

- Crew activities including grouting, erosion repair, tree removal, garbage clean-up, gate repair, and training on bloodborne pathogens.

Item No. 9 Questions and Comments by Trustees: Trustee L'Ecluse thanked Mr. Marck for his drone footage and asked if the District thought about using drones for other inspections along the levees.

Item No. 10 Adjourn: There being no further business requiring action by the Board, the meeting was adjourned by Trustee Shah at 1:18 p.m.

Attest:

Secretary

President

**American River Flood Control District
Staff Report**

Investment Transactions Summary; July 2022

LAIF:

- On July 15, 2022 a quarterly interest deposit was received in the amount of \$125.43.

City Pool A

- Statement was not available prior to the September 9, 2022 Board meeting

Interest Receivable is accrued and transferred to the Cash Balance at the discretion of the City.

River City Bank Money Market:

- On July 31, 2022, a monthly interest payment was received in the amount of \$260.91.

River City Bank Checking:

- On July 1, 2022, a deposit was received from Sacramento City Property Tax in the amount of \$586,601.98.
- On July 31, 2022, a monthly interest payment was deposited in the amount of \$31.90.
- Total amount of Accounts Payable cleared during the month of June was \$169,042.67.

**American River Flood Control District
Investment Transaction Report
July 2022**

Item 3b

Balance and Transactions

Account		LAIF	City Pool A	River City Bank Money Market	River City Bank Checking
Beginning Balance	7/1/22	\$66,994.97	\$8,932,468.10	\$877,593.22	\$53,770.58
Transactions					
River City Property Tax Distribution	7/1/22				\$586,601.98
LAIF Interest	7/15/22	\$125.43			
River City Bank Interest	7/31/22			\$260.91	\$31.90
Accounts Payable (cleared)					(\$169,042.67)
Ending Balance:	7/31/22	\$67,120.40	\$8,932,468.10	\$877,854.13	\$471,361.79

**City Pool A Interest is accrued and deposited in the account at the discretion of the City.

Interest

Date:	Aug 2021	Sep 2021	Oct 2021	Nov 2021	
LAIF	0.21	0.21	0.20	0.20	
City Pool A	0.92	0.88	0.91	0.87	
River City Bank Money Market	0.15	0.15	0.15	0.15	
River City Bank Checking	0.08	0.08	0.08	0.07	
Date:	Dec 2021	Jan 2022	Feb 2022	Mar 2022	
LAIF	0.54	0.23	0.28	0.37	
City Pool A	1.08	0.83	0.91	0.89	
River City Bank Money Market	0.15	0.15	0.15	0.15	
River City Bank Checking	0.08	0.08	0.08	0.08	
Date:	Apr 2022	May 2022	June 2022	July 2022	
LAIF	0.52	0.68	0.86	Statement Not Available	
City Pool A	0.96	1.04	1.15	Statement Not Available	
River City Bank Money Market	0.15	0.15	0.28	0.35	
River City Bank Checking	0.07	0.08	0.08	0.08	

California State Treasurer
Fiona Ma, CPA



Local Agency Investment Fund
 P.O. Box 942809
 Sacramento, CA 94209-0001
 (916) 653-3001

August 01, 2022

[LAIF Home](#)
[PMIA Average Monthly Yields](#)

AMERICAN RIVER FLOOD CONTROL DISTRICT

DISTRICT ENGINEER/MANAGER
 165 COMMERCE CIRCLE, SUITE D
 SACRAMENTO, CA 95815

[Tran Type Definitions](#)

Account Number: 90-34-002

July 2022 Statement

Effective Date	Transaction Date	Tran Type	Confirm Number	Web Confirm Number	Authorized Caller	Amount
7/15/2022	7/15/2022	QRD	1709426	N/A	SYSTEM	125.43

Account Summary

Total Deposit:	125.43	Beginning Balance:	66,994.97
Total Withdrawal:	0.00	Ending Balance:	67,120.40



River City Bank

WWW.RIVERCITYBANK.COM

PO Box 15247, Sacramento, CA 95851-0247

Return Service Requested

Item 3b



Last statement: June 30, 2022
This statement: July 31, 2022
Total days in statement period: 31

AMERICAN RIVER FLOOD CONTROL DISTRICT
C/O ROBERT MERRITT, CPA
4000 MAGNOLIA HILLS DR
EL DORADO HILLS CA 95762-6561

Page 1
0811100952
(0)

Direct inquiries to:
916-567-2836

Public Fund Money Market

Account number	0811100952	Beginning balance	\$877,593.22
Low balance	\$877,593.22	Total additions	260.91
Average balance	\$877,593.22	Total subtractions	0.00
Avg collected balance	\$877,593	Ending balance	\$877,854.13
Interest paid year to date	\$866.52		

CREDITS

Date	Description	Additions
07-31	Interest Credit	260.91

DAILY BALANCES

Date	Amount	Date	Amount	Date	Amount
06-30	877,593.22	07-31	877,854.13		

INTEREST INFORMATION

Annual percentage yield earned	0.35%
Interest-bearing days	31
Average balance for APY	\$877,593.22
Interest earned	\$260.91

AMERICAN RIVER FLOOD CONTROL DISTRICT
July 31, 2022

Page 2
0811100952

OVERDRAFT/RETURN ITEM FEES

	Total for this period	Total year-to-date
Total Overdraft Fees	\$0.00	\$0.00
Total Returned Item Fees	\$0.00	\$0.00



River City Bank

WWW.RIVERCITYBANK.COM

PO Box 15247, Sacramento, CA 95851-0247

Return Service Requested

Item 3b



Last statement: June 30, 2022
This statement: July 31, 2022
Total days in statement period: 31

AMERICAN RIVER FLOOD CONTROL DISTRICT
C/O ROBERT MERRITT, CPA
4000 MAGNOLIA HILLS DR
EL DORADO HILLS CA 95762-6561

Page 1
0811090736
(38)

Direct inquiries to:
916-567-2836

Public Fund Interest Checking

Account number	0811090736	Beginning balance	\$53,770.58
Enclosures	38	Total additions	586,633.88
Low balance	\$471,330.45	Total subtractions	169,042.67
Average balance	\$546,493.51	Ending balance	\$471,361.79
Avg collected balance	\$470,802		

CHECKS

Number	Date	Amount	Number	Date	Amount
8869	07-01	89.55	8895	07-18	248.88
8877 *	07-20	27,394.77	8896	07-19	778.66
8878	07-25	90.34	8897	07-19	61.15
8879	07-20	682.29	8898	07-20	398.31
8880	07-21	435.29	8899	07-21	327.52
8881	07-20	66.73	8900	07-25	585.07
8882	07-19	450.00	8901	07-20	1,340.42
8883	07-18	609.00	8902	07-20	688.00
8884	07-19	3,509.94	8903	07-19	905.86
8885	07-18	216.00	8904	07-19	200.00
8886	07-19	427.50	8905	07-21	320.01
8887	07-19	5,943.00	8906	07-19	2,613.54
8888	07-21	3,973.07	8907	07-20	15,069.93
8889	07-21	798.96	8908	07-20	512.61
8890	07-20	431.17	8909	07-20	2,762.44
8891	07-19	2,332.25	8910	07-20	810.00
8892	07-19	300.26	8911	07-20	2,713.39
8893	07-18	1,173.25	8912	07-25	870.26
8894	07-26	391.36			

* Skip in check sequence

AMERICAN RIVER FLOOD CONTROL DISTRICT
July 31, 2022

Page 2
0811090736

DEBITS

Date	Description	Subtractions
07-01	' ACH Withdrawal INTUIT PAYROLL S QUICKBOOKS 220701 946000047	27,148.17
07-05	' ACH Withdrawal INTUIT PAYROLL S QUICKBOOKS 220705 946000047	149.82
07-06	' ACH Withdrawal HEALTH EQUITY INC HealthEqui 220706	150.00
07-06	' ACH Withdrawal CALPERS 3100 100000016806277	1,823.89
07-06	' ACH Withdrawal CALPERS 3100 100000016806260	1,920.13
07-07	' ACH Withdrawal CALPERS 1900 100000016854856	1,982.62
07-12	' ACH Withdrawal CALPERS 1900 100000016852491	195.08
07-12	' ACH Withdrawal CALPERS 1900 100000016852478	9,033.50
07-14	' ACH Withdrawal CALPERS 3100 100000016806277	632.44
07-14	' ACH Withdrawal INTUIT PAYROLL S QUICKBOOKS 220714 946000047	4,449.23
07-15	' ACH Withdrawal INTUIT PAYROLL S QUICKBOOKS 220715 946000047	535.22
07-15	' ACH Withdrawal INTUIT PAYROLL S QUICKBOOKS 220715 946000047	29,875.80
07-18	' ACH Withdrawal HEALTH EQUITY INC HealthEqui 220718	152.95
07-18	' ACH Withdrawal CALPERS 3100 100000016824611	2,310.42
07-18	' ACH Withdrawal INTUIT PAYROLL S QUICKBOOKS 220718 946000047	3,032.25
07-18	' ACH Withdrawal CALPERS 3100 100000016824643	3,111.11
07-19	' ACH Withdrawal CALPERS 1900 100000016872699	2,018.70
07-31	' Service Charge ADDITIONAL DEBITS	0.56

AMERICAN RIVER FLOOD CONTROL DISTRICT
 July 31, 2022

Page 3
 0811090736

CREDITS

Date	Description	Additions
07-01	Deposit	586,601.98
07-31	Interest Credit	31.90

DAILY BALANCES

Date	Amount	Date	Amount	Date	Amount
06-30	53,770.58	07-12	597,879.80	07-20	479,122.33
07-01	613,134.84	07-14	592,798.13	07-21	473,267.48
07-05	612,985.02	07-15	562,387.11	07-25	471,721.81
07-06	609,091.00	07-18	551,533.25	07-26	471,330.45
07-07	607,108.38	07-19	531,992.39	07-31	471,361.79

INTEREST INFORMATION

Annual percentage yield earned	0.08%
Interest-bearing days	31
Average balance for APY	\$470,802.93
Interest earned	\$31.90

OVERDRAFT/RETURN ITEM FEES

	Total for this period	Total year-to-date
Total Overdraft Fees	\$0.00	\$0.00
Total Returned Item Fees	\$0.00	\$0.00

CERTIFICATION

The American River Flood Control District's investment portfolio [] is [is not] in compliance with the District's Financial Management Investments Plan.

The District's investment portfolio is not in compliance in the following respects:

A cash flow analysis confirms that the District [is] [is not] expected to be able to meet its expenditure requirements for the next six months.

The District's cash is insufficient to meet obligations for the next six months as a result of the following:

Attached hereto are the most recent statements of accounts of the following District accounts:

- LAIF Account, State Treasurer's Office **Dated July 2022**
- Investment Pool A Account, City of Sacramento **Dated July 2022**
- District Checking Account, River City Bank **Dated July 2022**
- District Repurchase Account, River City Bank **Dated July 2022**

Certified by: _____ Date: _____
Rae Vander Werf, District Treasurer

American River Flood Control District
Statement of Operations
July 1, 2022 to August 31, 2022 (Two Months Ending of Fiscal 2023)
For Internal Use Only

	Year to Date July 1, 2022 to August 31, 2022	Budget	Percent of Budget
Revenues			
Benefit assessment	\$ -	\$ 1,429,793	0.00%
Consolidated capital assessment	-	980,000	0.00%
Interest	579	77,267	0.75%
O & M agreements	-	312,057	0.00%
Miscellaneous	-	-	Not budgeted
Total Revenues	579	2,799,117	0.02%
M & O Expenses			
Salaries and wages	135,445	804,858	16.83%
Payroll tax expense	10,387	64,389	16.13%
Pension expense	33,673	230,196	14.63%
Compensation insurance	-	40,243	0.00%
Medical/dental/vision	47,408	231,542	20.47%
Fuel/oil reimbursement	5,608	55,000	10.20%
Equipment rental	-	15,000	0.00%
Equipment repairs/parts	4,816	65,000	7.41%
Equipment purchases (< \$5,000)	-	15,000	0.00%
Shop supplies	146	27,500	0.53%
Levee maint. (supp. & material)	304	20,000	1.52%
Levee maint. chemicals	-	40,000	0.00%
Levee maint. services	1,185	80,000	1.48%
Rodent abatement (supplies & materials)	5,979	10,000	59.79%
Employee uniforms	3,898	6,000	64.97%
Staff training	-	5,000	0.00%
Regulation Compliance (OSHA)	865	25,000	3.46%
Miscellaneous	-	1,500	0.00%
Small tools & equipment	-	7,500	0.00%
Emergency preparedness program	4,200	25,000	16.80%
Engineering services	-	20,000	0.00%
Encroachment remediation	-	15,000	0.00%
Urban camp cleanup	2,588	30,000	8.63%
Total M & O Expenses	256,502	1,833,728	13.99%
Administration Expenses			
Board of trustees compensation	934	7,600	12.29%
Trustee expenses	117	2,400	4.88%
Trustee training	-	5,000	0.00%
Accounting services	700	15,000	4.67%
Legal services (general)	-	50,000	0.00%
Utilities	5,046	40,000	12.62%
Telephone	2,066	25,000	8.26%
Retiree benefits	34,043	148,109	22.99%
Office/shop/yard lease	1,236	7,491	16.50%
Office equipment/furniture	-	2,500	0.00%
Auto allowance	1,185	6,600	17.95%
Parking reimbursement	-	500	0.00%
General office expense	1,388	15,000	9.25%
Technology and software	1,068	10,000	10.68%
Dues and associations	9,378	25,000	37.51%
Property and liability insurance	15,087	42,000	35.92%
Public relations/information	-	30,000	0.00%
Miscellaneous	595	5,000	11.90%
Conference/Workshop/Seminar	-	2,500	0.00%
Election expenses	-	200,000	0.00%
Employee morale/wellness	-	2,000	0.00%
Investment fees	-	20,000	0.00%
Community services	-	1,500	0.00%
Bookkeeping services	405	14,000	2.89%
Property taxes	-	3,000	0.00%
Building maintenance	5,819	10,000	58.19%
County Dtech fees for DLMS	9,135	55,000	16.61%
Interest expense	3	-	Not budgeted
Total Administration Expenses	88,205	745,200	11.84%
Special Projects Expenses			
Engineering studies/survey studies	-	20,000	0.00%
Levee standards compliance	-	25,000	0.00%
Small capital projects	143,039	170,000	84.14%
Total Special Project Expenses	143,039	215,000	66.53%
Capital Outlay			
Equipment purchases (over \$5,000)	-	200,000	0.00%
Total Capital Outlay	-	200,000	
Capital Outlay: District Facilities			
District headquarters facilities	-	350,000	0.00%
	-	350,000	

Note: Amounts above are not audited

The above information is current through the last day of the previous month's bank activity.

Data has been verified by the bookkeeper and physical copies of checks have not been reviewed or received and some checks may not have cleared the bank account.

AMERICAN RIVER FLOOD CONTROL DISTRICT
Cash Flow Report
July 2021 through June 2022

Cash Flow Report													
Maintenance and Operations Expens	Jul 22	Aug 22	Sep 22	Oct 22	Nov 22	Dec 22	Jan 23	Feb 23	Mar 23	Apr 23	May 23	Jun 23	TOTAL
500 - Salary/Wages	60,084.44	59,218.28	35,659.96	0.00	0.00	0.00	0.00	0.00	0.00	0.00	0.00	0.00	154,962.68
501 - Payroll Taxes	5,110.55	4,762.17	2,857.61	0.00	0.00	0.00	0.00	0.00	0.00	0.00	0.00	0.00	12,730.33
502 - Pension	15,995.97	17,356.29	12,873.86	0.00	0.00	0.00	0.00	0.00	0.00	0.00	0.00	0.00	46,226.12
503 - Compensation Insurance	0.00	0.00	0.00	0.00	0.00	0.00	0.00	0.00	0.00	0.00	0.00	0.00	0.00
504 - Medical/Dental/Vision	16,058.52	15,852.52	0.00	0.00	0.00	0.00	0.00	0.00	0.00	0.00	0.00	0.00	31,911.04
508 - Fuel/Oil	5,502.74	5,607.64	0.00	0.00	0.00	0.00	0.00	0.00	0.00	0.00	0.00	0.00	11,110.38
509 - Equipment Rental	0.00	0.00	0.00	0.00	0.00	0.00	0.00	0.00	0.00	0.00	0.00	0.00	0.00
510 - Equipment Purchase(< \$5000	0.00	0.00	0.00	0.00	0.00	0.00	0.00	0.00	0.00	0.00	0.00	0.00	0.00
511 - Equipment Repair/Parts	806.43	4,060.72	0.00	0.00	0.00	0.00	0.00	0.00	0.00	0.00	0.00	0.00	4,867.15
512 - Shop Supplies	501.78	174.46	0.00	0.00	0.00	0.00	0.00	0.00	0.00	0.00	0.00	0.00	676.24
514 - Levee Maint(Supplies&Materi	0.00	326.12	0.00	0.00	0.00	0.00	0.00	0.00	0.00	0.00	0.00	0.00	326.12
515 - Levee Maintenance Services	0.00	1,185.12	0.00	0.00	0.00	0.00	0.00	0.00	0.00	0.00	0.00	0.00	1,185.12
516 - Employee Uniforms	0.00	3,897.96	0.00	0.00	0.00	0.00	0.00	0.00	0.00	0.00	0.00	0.00	3,897.96
518 - Staff Training	0.00	0.00	0.00	0.00	0.00	0.00	0.00	0.00	0.00	0.00	0.00	0.00	0.00
519 - Miscellaneous O&M	0.00	0.00	0.00	0.00	0.00	0.00	0.00	0.00	0.00	0.00	0.00	0.00	0.00
521 - Small Tools & Equip	1,483.13	0.00	0.00	0.00	0.00	0.00	0.00	0.00	0.00	0.00	0.00	0.00	1,483.13
523 - Levee Maint. (Chemicals)	778.66	0.00	0.00	0.00	0.00	0.00	0.00	0.00	0.00	0.00	0.00	0.00	778.66
525 - Emergency Preparedness Pr	0.00	0.00	0.00	0.00	0.00	0.00	0.00	0.00	0.00	0.00	0.00	0.00	0.00
530 - Encroachment Remediation I	0.00	0.00	0.00	0.00	0.00	0.00	0.00	0.00	0.00	0.00	0.00	0.00	0.00
532 - Rodent Abatement	0.00	5,979.25	0.00	0.00	0.00	0.00	0.00	0.00	0.00	0.00	0.00	0.00	5,979.25
533 - Urban Camp Cleanup	677.06	2,932.56	0.00	0.00	0.00	0.00	0.00	0.00	0.00	0.00	0.00	0.00	3,609.62
605 - Engineering Services	(5,147.50)	9,046.71	0.00	0.00	0.00	0.00	0.00	0.00	0.00	0.00	0.00	0.00	3,899.21
615 - Survey Services	0.00	285.69	0.00	0.00	0.00	0.00	0.00	0.00	0.00	0.00	0.00	0.00	285.69
616 - Environmental Services/Studi	0.00	0.00	0.00	0.00	0.00	0.00	0.00	0.00	0.00	0.00	0.00	0.00	0.00
Total M&O Expense	101,851.78	130,685.49	51,391.43	0.00	0.00	0.00	0.00	0.00	0.00	0.00	0.00	0.00	283,928.70

Administrative Expenses	Jul 22	Aug 22	Sep 22	Oct 22	Nov 22	Dec 22	Jan 23	Feb 23	Mar 23	Apr 23	May 23	Jun 23	TOTAL
505 - Telephone	1,514.91	1,553.69	0.00	0.00	0.00	0.00	0.00	0.00	0.00	0.00	0.00	0.00	3,068.60
506 - Utility Charges	3,804.54	5,071.89	0.00	0.00	0.00	0.00	0.00	0.00	0.00	0.00	0.00	0.00	8,876.43
507 - Office/Shop Lease	0.00	1,848.24	0.00	0.00	0.00	0.00	0.00	0.00	0.00	0.00	0.00	0.00	1,848.24
513 - Office Supplies	0.00	0.00	0.00	0.00	0.00	0.00	0.00	0.00	0.00	0.00	0.00	0.00	0.00
517 - Auto Allowance	550.00	550.00	275.00	0.00	0.00	0.00	0.00	0.00	0.00	0.00	0.00	0.00	1,375.00
520 - Retiree Benefits	11,592.25	11,597.01	0.00	0.00	0.00	0.00	0.00	0.00	0.00	0.00	0.00	0.00	23,189.26
522 - Office Equipment/Furniture	0.00	0.00	0.00	0.00	0.00	0.00	0.00	0.00	0.00	0.00	0.00	0.00	0.00
526 - Mileage/Parking Reimburs	0.00	0.00	0.00	0.00	0.00	0.00	0.00	0.00	0.00	0.00	0.00	0.00	0.00
527 - General Office Expense	591.06	1,008.25	0.00	0.00	0.00	0.00	0.00	0.00	0.00	0.00	0.00	0.00	1,599.31
529 - Pre-funding Retiree Benefits	0.00	0.00	0.00	0.00	0.00	0.00	0.00	0.00	0.00	0.00	0.00	0.00	0.00
531 - Technology & Software	4,750.66	675.52	0.00	0.00	0.00	0.00	0.00	0.00	0.00	0.00	0.00	0.00	5,426.18
600 - Board of Trustees Compensa	475.00	380.00	0.00	0.00	0.00	0.00	0.00	0.00	0.00	0.00	0.00	0.00	855.00
601 - Trustee Expenses	0.00	117.45	0.00	0.00	0.00	0.00	0.00	0.00	0.00	0.00	0.00	0.00	117.45
602 - Accounting Services	0.00	0.00	0.00	0.00	0.00	0.00	0.00	0.00	0.00	0.00	0.00	0.00	0.00
603 - Legal Fees (General)	6,552.00	7,543.00	0.00	0.00	0.00	0.00	0.00	0.00	0.00	0.00	0.00	0.00	14,095.00
604 - Flood Litigation	0.00	0.00	0.00	0.00	0.00	0.00	0.00	0.00	0.00	0.00	0.00	0.00	0.00
606 - Legislative Services	0.00	0.00	0.00	0.00	0.00	0.00	0.00	0.00	0.00	0.00	0.00	0.00	0.00
607 - Dues and Assoc. Expens	0.00	0.00	0.00	0.00	0.00	0.00	0.00	0.00	0.00	0.00	0.00	0.00	0.00
608 - Insurance Premiums	15,069.93	0.00	0.00	0.00	0.00	0.00	0.00	0.00	0.00	0.00	0.00	0.00	15,069.93
609 - Conference /Workshops/Sem	0.00	0.00	0.00	0.00	0.00	0.00	0.00	0.00	0.00	0.00	0.00	0.00	0.00
610 - Public Relations Information	585.07	0.00	0.00	0.00	0.00	0.00	0.00	0.00	0.00	0.00	0.00	0.00	585.07
611 - Election Expenses	0.00	0.00	0.00	0.00	0.00	0.00	0.00	0.00	0.00	0.00	0.00	0.00	0.00
612 - District Annexations	0.00	0.00	0.00	0.00	0.00	0.00	0.00	0.00	0.00	0.00	0.00	0.00	0.00
613 - Community Services	0.00	0.00	0.00	0.00	0.00	0.00	0.00	0.00	0.00	0.00	0.00	0.00	0.00
614 - Miscellaneous Admin	215.26	353.50	141.50	0.00	0.00	0.00	0.00	0.00	0.00	0.00	0.00	0.00	710.26
617 - Investment Fees	0.00	0.00	0.00	0.00	0.00	0.00	0.00	0.00	0.00	0.00	0.00	0.00	0.00
618 - Property Tax	0.00	0.00	0.00	0.00	0.00	0.00	0.00	0.00	0.00	0.00	0.00	0.00	0.00
619 - Building Maintenance	0.00	0.00	0.00	0.00	0.00	0.00	0.00	0.00	0.00	0.00	0.00	0.00	0.00
620 - Bookkeeping Services	810.00	405.00	0.00	0.00	0.00	0.00	0.00	0.00	0.00	0.00	0.00	0.00	1,215.00
621 - County Assessment Fees	0.00	0.00	0.00	0.00	0.00	0.00	0.00	0.00	0.00	0.00	0.00	0.00	0.00
622 - County DTech Fees for DLMS	0.00	9,134.83	0.00	0.00	0.00	0.00	0.00	0.00	0.00	0.00	0.00	0.00	9,134.83

AMERICAN RIVER FLOOD CONTROL DISTRICT
Cash Flow Report
July 2021 through June 2022

623 - Employee Morale/Wellness	0.00	0.00	0.00	0.00	0.00	0.00	0.00	0.00	0.00	0.00	0.00	0.00	0.00	0.00
Total Administrative	46,510.68	40,238.38	416.50	0.00	0.00	0.00	0.00	0.00	0.00	0.00	0.00	0.00	0.00	87,165.56

Special Projects Expenses	Jul 22	Aug 22	Sep 22	Oct 22	Nov 22	Dec 22	Jan 23	Feb 23	Mar 23	Apr 23	May 23	Jun 23	TOTAL
702 - Engineering/Survey Studies	0.00	0.00	0.00	0.00	0.00	0.00	0.00	0.00	0.00	0.00	0.00	0.00	0.00
703 - Encroachment Remediation	0.00	0.00	0.00	0.00	0.00	0.00	0.00	0.00	0.00	0.00	0.00	0.00	0.00
704 - Vegetation Management	0.00	0.00	0.00	0.00	0.00	0.00	0.00	0.00	0.00	0.00	0.00	0.00	0.00
705 - Small Capital Projects	2,059.64	143,039.49	0.00	0.00	0.00	0.00	0.00	0.00	0.00	0.00	0.00	0.00	145,099.13
707 - Levee Standards Compliance	0.00	0.00	0.00	0.00	0.00	0.00	0.00	0.00	0.00	0.00	0.00	0.00	0.00
Total Special Projects	2,059.64	143,039.49	0.00	0.00	0.00	0.00	0.00	0.00	0.00	0.00	0.00	0.00	145,099.13

Capital Outlay: Flood Control	Jul 22	Aug 22	Sep 22	Oct 22	Nov 22	Dec 22	Jan 23	Feb 23	Mar 23	Apr 23	May 23	Jun 23	TOTAL
700 - Bank Protection	0.00	0.00	0.00	0.00	0.00	0.00	0.00	0.00	0.00	0.00	0.00	0.00	0.00
701 - Magpie Creek	0.00	0.00	0.00	0.00	0.00	0.00	0.00	0.00	0.00	0.00	0.00	0.00	0.00
706 - Property Acquisition	0.00	0.00	0.00	0.00	0.00	0.00	0.00	0.00	0.00	0.00	0.00	0.00	0.00
709 - Equipment Purchase (> \$500)	(111,168.17)	0.00	0.00	0.00	0.00	0.00	0.00	0.00	0.00	0.00	0.00	0.00	(111,168.17)
Total Capital Outlay: Flood Control	(111,168.17)	0.00	0.00	0.00	0.00	0.00	0.00	0.00	0.00	0.00	0.00	0.00	(111,168.17)

Income	Jul 22	Aug 22	Sep 22	Oct 22	Nov 22	Dec 22	Jan 23	Feb 23	Mar 23	Apr 23	May 23	Jun 23	TOTAL
120 - Benefit Assessment	0.00	29,121.78	0.00	0.00	0.00	0.00	0.00	0.00	0.00	0.00	0.00	0.00	29,121.78
122 - SAFCA CAD4	0.00	0.00	0.00	0.00	0.00	0.00	0.00	0.00	0.00	0.00	0.00	0.00	0.00
123 - Interest	418.24	285.69	0.00	0.00	0.00	0.00	0.00	0.00	0.00	0.00	0.00	0.00	703.93
124 - O&M Agreements	0.00	0.00	0.00	0.00	0.00	0.00	0.00	0.00	0.00	0.00	0.00	0.00	0.00
126 - Miscellaneous Income	13,501.75	0.00	0.00	0.00	0.00	0.00	0.00	0.00	0.00	0.00	0.00	0.00	13,501.75
Total Income	13,919.99	29,407.47	0.00	0.00	0.00	0.00	0.00	0.00	0.00	0.00	0.00	0.00	43,327.46

Fund Balance

District Operations Fund	Jul 22	Aug 22	Sep 22	Oct 22	Nov 22	Dec 22	Jan 23	Feb 23	Mar 23	Apr 23	May 23	Jun 23
Beginning Balance	132,508.93	(3,993.18)	(288,549.07)	0.00	0.00	0.00	0.00	0.00	0.00	0.00	0.00	0.00
Income	13,919.99	29,407.47	0.00	0.00	0.00	0.00	0.00	0.00	0.00	0.00	0.00	0.00
Expenses	150,422.10	313,963.36	51,807.93	0.00	0.00	0.00	0.00	0.00	0.00	0.00	0.00	72,000.00
Ending Balance	(3,993.18)	(288,549.07)	(340,357.00)	0.00	0.00	0.00	0.00	0.00	0.00	0.00	0.00	(72,000.00)

Capital Outlay Reserve Fund	Jul 22	Aug 22	Sep 22	Oct 22	Nov 22	Dec 22	Jan 23	Feb 23	Mar 23	Apr 23	May 23	Jun 23
Beginning Balance	920,000.00	920,000.00	920,000.00	0.00	0.00	0.00	0.00	0.00	0.00	0.00	0.00	0.00
Income	0.00	0.00	0.00	0.00	0.00	0.00	0.00	0.00	0.00	0.00	0.00	0.00
Expenses	0.00	0.00	0.00	0.00	0.00	0.00	0.00	0.00	0.00	0.00	0.00	0.00
Ending Balance	920,000.00	920,000.00	920,000.00	0.00	0.00	0.00	0.00	0.00	0.00	0.00	0.00	0.00

Retiree Health Benefit Reserve Fund	Jul 22	Aug 22	Sep 22	Oct 22	Nov 22	Dec 22	Jan 23	Feb 23	Mar 23	Apr 23	May 23	Jun 23
Beginning Balance	3,552,014.00	3,552,014.00	3,552,014.00	0.00	0.00	0.00	0.00	0.00	0.00	0.00	0.00	0.00
Income	0.00	0.00	0.00	0.00	0.00	0.00	0.00	0.00	0.00	0.00	0.00	72,000.00
Expenses	0.00	0.00	0.00	0.00	0.00	0.00	0.00	0.00	0.00	0.00	0.00	0.00
Ending Balance	3,552,014.00	3,552,014.00	3,552,014.00	0.00	0.00	0.00	0.00	0.00	0.00	0.00	0.00	72,000.00

Flood Emergency Response Reserve Fund	Jul 22	Aug 22	Sep 22	Oct 22	Nov 22	Dec 22	Jan 23	Feb 23	Mar 23	Apr 23	May 23	Jun 23
Beginning Balance	1,500,000.00	1,500,000.00	1,500,000.00	0.00	0.00	0.00	0.00	0.00	0.00	0.00	0.00	0.00
Income	0.00	0.00	0.00	0.00	0.00	0.00	0.00	0.00	0.00	0.00	0.00	0.00
Expenses	0.00	0.00	0.00	0.00	0.00	0.00	0.00	0.00	0.00	0.00	0.00	0.00
Ending Balance	1,500,000.00	1,500,000.00	1,500,000.00	0.00	0.00	0.00	0.00	0.00	0.00	0.00	0.00	0.00

Emergency Repair Reserve Fund	Jul 22	Aug 22	Sep 22	Oct 22	Nov 22	Dec 22	Jan 23	Feb 23	Mar 23	Apr 23	May 23	Jun 23
Beginning Balance	1,500,000.00	1,500,000.00	1,500,000.00	0.00	0.00	0.00	0.00	0.00	0.00	0.00	0.00	0.00
Income	0.00	0.00	0.00	0.00	0.00	0.00	0.00	0.00	0.00	0.00	0.00	0.00
Expenses	0.00	0.00	0.00	0.00	0.00	0.00	0.00	0.00	0.00	0.00	0.00	0.00
Ending Balance	1,500,000.00	1,500,000.00	1,500,000.00	0.00	0.00	0.00	0.00	0.00	0.00	0.00	0.00	0.00

Total Balance	7,468,020.82	7,183,464.93	7,131,657.00	0.00	0.00	0.00	0.00	0.00	0.00	0.00	0.00	0.00
----------------------	---------------------	---------------------	---------------------	-------------	-------------	-------------	-------------	-------------	-------------	-------------	-------------	-------------

**CONFLICT OF INTEREST CODE
FOR
AMERICAN RIVER FLOOD CONTROL DISTRICT**

The Political Reform Act, Government Code § 81000 et seq., requires state and local government agencies to adopt and promulgate conflict of interest codes. The Fair Political Practices Commission has adopted a regulation, Ca. Code Regs. tit. 2, § 18730, which contains the terms of a standard conflict of interest code, which can be incorporated by reference, and which may be amended by the Fair Political Practices Commission to conform to amendments to the Political Reform Act after public notice and hearings. Therefore, the terms of Ca. Code Regs tit. 2, § 18730 and any amendments to it duly adopted by the Fair Political Practices Commission, along with the attached Appendix in which officials and employees are designated and disclosure categories are set forth, are hereby incorporated by reference and constitute the Conflict of Interest Code of American River Flood Control District.

Designated employees shall file their statements of economic interests with American River Flood Control District, which will make the statements available for public inspection and reproduction (Government Code § 81008.)

APPENDIX OF DESIGNATED POSITIONS

<u>DESIGNATED POSITIONS</u>	<u>ASSIGNED DISCLOSURE CATEGORIES</u>
Officials Who Manage Public Investments And Candidates for any such office ¹ .	
1. Office Manager	2
2. Consultants*	1
3. Superintendent	1

*Consultants shall be included in the list of designated employees and shall disclose pursuant to the broadest disclosure category in the Code subject to the following limitation:

The manager of the district may determine in writing that a particular consultant, although a "designated position," is hired to perform a range of duties that is limited in scope and thus is not required to fully comply with the disclosure requirements in this section. Such written determination shall include a description of the consultant's duties and, based upon that description, a statement of the extent of disclosure requirements. The manager's determination is a public record and shall be retained for public inspection in the same manner and location as this conflict of interest code.

¹ It has been determined that the positions listed below and those who are candidates for these office manage public investments and will file a statement of economic interests pursuant Government Code § 87200:
Manager/Trustees, Flood Emergency Manager/Relief Manager

APPENDIX OF DISCLOSURE CATEGORIES

Category 1

All interests in real property² as well as investments and business positions in business entities and income from agricultural or farming entities, real estate developers, contractors, agents or brokers, as well as sources which provide facilities, services, supplies, or equipment of the type utilized by the district, including but not limited to:

- Pipe, valves, fittings, etc.
- Pumps, motors, etc.
- Meters
- Construction and building materials
- Engineering services
- Construction contractors
- Safety equipment and facilities
- Hardware tools and supplies
- Freight and hauling
- Motor vehicles, heavy equipment,
 Special vehicles and parts and services thereto
- Petroleum products
- Photographic services, supplies and equipment
- Janitorial services
- Water quality testing
- Chemicals, insecticides, weed killers
- Communications equipment and services
- Travel agencies
- Well drilling
- Electrical equipment
- Computer hardware and software
- Architectural services
- Water treatment equipment, supplies and services
- Custom farming services such as weed abatement, etc.
- Telemetry equipment
- Appraisal services
- Printing, reproduction, record keeping, etc.
- Office equipment
- Accounting services
- Real estate agent/brokers and investment firms
- Title companies
- Public utilities

² Pursuant to Government Code § 82035, designated officials and employees in this disclosure category need only disclose real property any part of which is located either (a) within or not more than two miles from the geographical boundaries of the District or (b) within or not more than two miles from land used or owned by the District outside the geographical boundaries of the District.

Category 1 Cont'd

Banks and savings and loan institutions
Financial audit services
Consulting services, such as legal, energy and power, engineering, data processing, computers, labor relations, public relations, planning, economics, environmental, and appraisal
Agricultural production

Category 2

All interest in real property³ as well as investments and business positions in business entities and income from sources which provide supplies, services, equipment or facilities of the type utilized by the district, including but not limited to:

Printing, reproduction, record keeping equipment, supplies and services
Janitorial services
Office equipment, supplies and services
Travel agencies
Employment agencies
Medical services and supplies
Computer hardware and software
Communications services and equipment
Consulting services
Accounting services
Financial audit services
Banks and savings and loan institutions
Appraisal services

³ Pursuant to Government Code § 82035, designated officials and employees in this disclosure category need only disclose real property any part of which is located either (a) within or not more than two miles from the geographical boundaries of the District or (b) within or not more than two miles from land used or owned by the District outside the geographical boundaries of the District.

American River Flood Control District

Declaration of Lathrop Way Parcel as Surplus Assessor's Parcel Number 275-0300-009

Staff Report

Discussion:

The District purchased the strip of land between the levee and Lathrop Way in 2012. At the time, there was a chain link fence at the toe of the levee that prevented access for operations and maintenance. The District sought to acquire the parcel to enhance access to the levee for O&M. District staff worked with the North Sac Land Company to purchase the parcel for \$800.

After the purchase, work was done to remove the fence and perform slight grading at the toe to facilitate mowing. Large rocks were placed at intervals to prevent unauthorized vehicle access onto the levee slope. The site was well maintained and displayed a natural setting until approximately 2017.

Recent years have seen a marked increase in unauthorized camping along the levees. The Lathrop Way parcel has been a target for camping and has experienced a rapid decline in condition and its use for levee O&M. Numerous encampments have been present on the parcel for the last two years and all attempts to have law enforcement remove the encampments have been unsuccessful. Neighbors in the business park and one vocal City Councilperson have made numerous requests to the District to clear the parcel of the unsafe and unsightly conditions. Without help from City law enforcement, the District has no means to correct the conditions on the parcel. Some clean-up efforts have been made by District crews, but these efforts are merely 'housekeeping' if the encampments are not cleared by law enforcement.

The parcel now serves no purpose for the District since the District's intent to acquire it was to enhance access to the levee. Access to the levee is actually much worse now than before the District acquired the parcel. Ongoing efforts to remove debris at this location have increased costs dramatically. It is therefore in the District's best interest to relinquish ownership of the parcel.

Since the parcel no longer holds the value that was originally intended, the parcel should be declared surplus by the Board. Once designated as surplus, the parcel should be disposed of or sold per the Board's preference. The parcel has a very low value so numerous disposal options are available. Staff can also work with the future owner of the parcel to reserve a maintenance easement to allow continued access for District O&M.

Recommendation:

The General Manager recommends that the Board of Trustees declare the Lathrop Way parcel as surplus and direct the GM to sell or dispose of it accordingly.

Search for Parcels, Addresses, Intersections and Landmarks



Parcel Details | Layers | Measure | Search Results | Select Features | Aerial Imagery | Other Imagery | Zoom To X/Y | Display X/Y/Elevation | Recent Sales | Date Range | Advanced Search | Legend | Help

Information for Parcel: 275-0300-009-0000 [Zoom To](#) [Flash](#)

PROPERTY INFORMATION

Assessor Parcel # 27503000090000
 Situs Address 251 LATHROP WAY
 Postal City/Zip SACRAMENTO 95815
 Jurisdiction SACRAMENTO
 Assessor Roll Status ACTIVE
 Parcel Type LND

PARCEL ADDRESSES

The primary address for this parcel is highlighted in yellow below.

Address	Source	MAD ID
244 LATHROP WAY, 95815	SAC_MAD	541229
251 LATHROP WAY, 95815	SAC_MAD	541266

OWNER INFORMATION

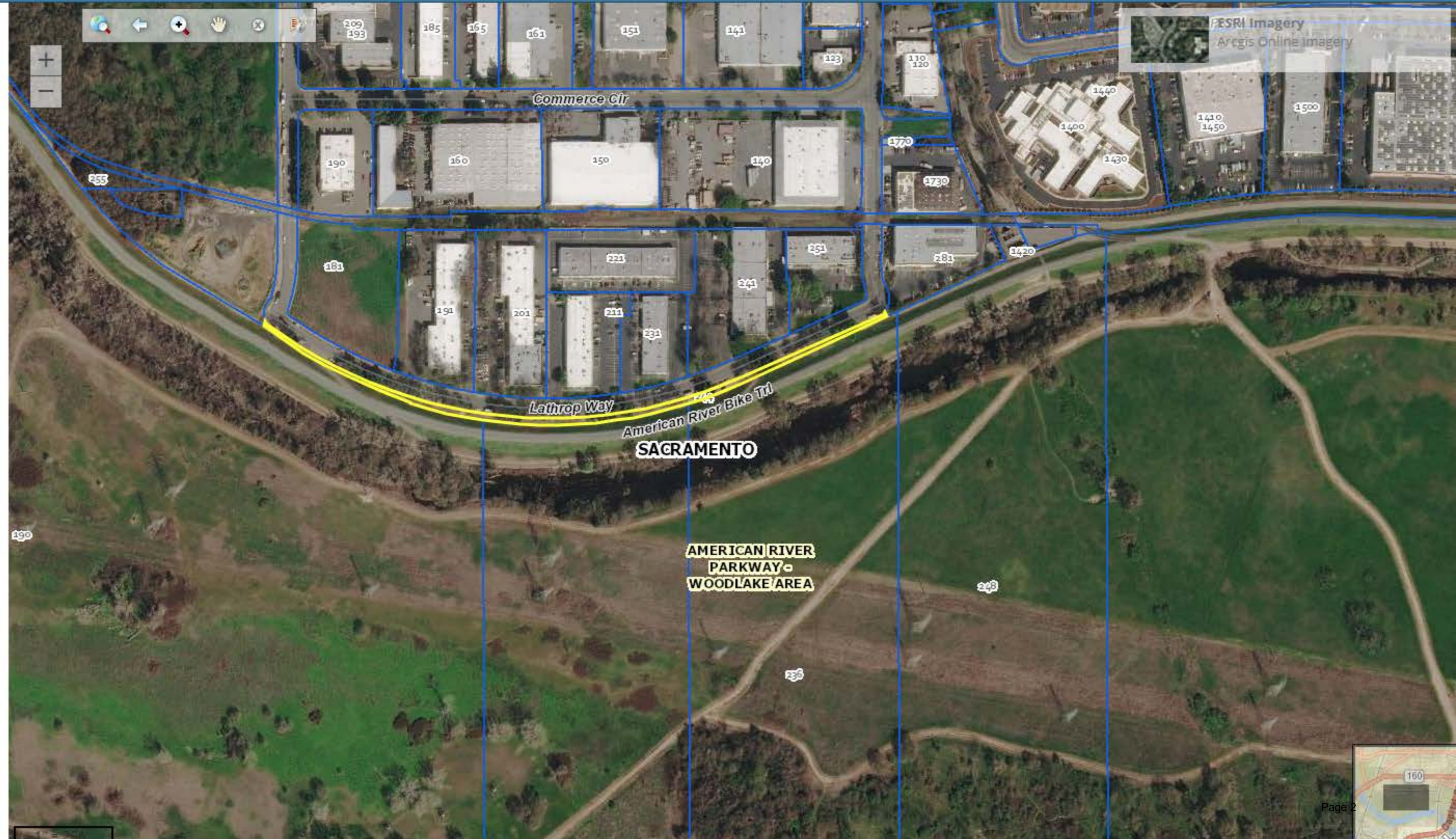
Owner AMERICAN RIVER FLOOD CONTROL DISTRICT
 Care Of
 Mailing Address 165 COMMERCE CIR
 SACRAMENTO, CA 95815
 Recorded Document 20130118-1380
 Document Type GRANT DEED/CORP. DEED/GIFT DEED/JNT TEN DEED
 Event Date 2013-01-18
 Owner Code 10-Govt owned prop within jurisdictional boundary
 Documentary Transfer Tax Full - \$1.1
 Estimated Sales Price \$1,000
[About this data](#) [Data Field Descriptions](#)

OWNER HISTORY

ZONING

PLANNING

PLANNING ACTIVITIES





SACRAMENTO

Lathrop Way

American River Bike Trl









03.22.2022 09:38

American River Flood Control District

Purchase of International Dump Truck from Sourcewell Cooperative Purchasing

Staff Report

Discussion:

The District needs to acquire a new dump truck for general use and to replace a 2010 International dump truck currently in use. The 2010 International no longer meets California air quality standards and will not be able to be registered in 2023. Staff has identified the most optimal vehicle to serve in this role as a new 2024 International dump truck. This truck will be used for material hauling and heavy towing.

State law requires that purchases over \$25,000 must be made through a public bidding process. This ensures that public funds are spent on items at the best available price. In the past, the District has acquired large equipment through solicitation of public bids or through cooperative purchasing programs such as the CA Multiple Award Schedule or Sourcewell. Cooperative purchasing programs have already bid the items for sale publicly and include discounted rates based on collective bidding.

District staff recently obtained a cost quote for acquisition of this piece of equipment through Sourcewell. The following cost quote is the best available price for this equipment:

1. New 2024 International Dumptruck with Enoven dump body
Complete with tax and fees = **\$212,803.19**

Due to current backlog on vehicle production, this order may take 10-12 months to be filled.

Recommendation:

The General Manager recommends that the Board of Trustees approve the purchase of the specified equipment from Sourcewell.

Riverview International Trucks, LLC
 2445 Evergreen Ave.
 West Sacramento
 California 95691
 916-371-3110



Date	08/05/22		SS# / TIN
Buyer	American River Flood Control District		
Address	185 Commerce Circle		
City, State	Zip	County	Tax Rate
Sacramento, CA	95815	Sacramento	8.750%
ATTN:			
Ship To Address	same		

Stock Number	Mileage
Driver's License Number	State
License Plate Number	

Year	New/Used	Make	Model	Serial #/Description	Axles	Stock Number	Sales Price
2024	New	Intl	HX	TBD - New Build - chassis specs attached	3	TBD	\$195,585.00
				* Includes Enoven installed 15' dump and all related components listed in specs attached			

Registration				Purchase	
Registered Owner			Sales Price	1	\$195,585.00
Address			Doc Fee	2	\$80.00
Legal Owner			Sales Tax	3	\$17,120.69
Address			Excise Tax	4	\$0.00
Trades	#1	#2	CA Tire Fee	5	\$17.50
Make			\$1.75/TIRE		
Yr./Mdl			Sale Price	6	\$212,803.19
Chassis#			Including Taxes		
Body Typ			Down Payment	7a	\$0.00
Allowance	Amounts	Amounts	Cash		
	\$0.00	\$0.00	Trade In	7b	\$0.00
Amt.Owed	\$0.00	\$0.00	Net allowance		
Lien Holder Information			Total Down Payment	8	\$0.00
Net Trade Allowance	\$0.00	\$0.00	Forward Balance	9	\$212,803.19
			Optional Service Contract	10	\$0.00
			Vin Verification Fee		\$0.00
			License Fees	11	\$0.00
			Balance Due		\$212,803.19

Source of Payment:	Out of State Delivery Required?	If yes, City and State of delivery:
	No	
Optional Service Contract info -	Mileage at delivery:	Body type: DUMP
Form/Contract#	Unladen weight:	GCVW/GVWR: 54,600 GVWR
Month/miles/hours?		
Accepted By:(Management)	**Pricing is subject to future surcharges and/or increases due to government regulations or as market conditions change.**	
Order Taken By:	Purchaser Signature:	Date:

Note: This order is subject to the acceptance of the dealer to which it is addressed, and is subject to Written acceptance by its Sales Manager. Purchaser's deposit will be returned if not accepted. If Vehicle(s) is used the vehicle(s) is sold "as is" with no warranty. Purchaser acknowledges receipt of exact copy of this order.

INTERNATIONAL®**August 05, 2022****Prepared For:**

American River Flood Control
 Richard Marck
 165 Commerce Cir.
 Sacramento, CA 95815-4226
 (916)929 - 4006
 Reference ID: N/A

Presented By:

RIVERVIEW INTL TRKS, LLC
 Jason Farrell
 2445 EVERGREEN AVENUE
 WEST SACRAMENTO CA 95691 -
 (916)371-3110

Thank you for the opportunity to provide you with the following quotation on a new International truck. I am sure the following detailed specification will meet your operational requirements, and I look forward to serving your business needs.

Model Profile
2023 HX620 SBA (HX620)

AXLE CONFIG: 6X4
APPLICATION: Construction Dump
MISSION: Requested GVWR: 54000. Calc. GVWR: 54600. Calc. GCWR: 125000
DIMENSION: Wheelbase: 205.00, CA: 136.00, Axle to Frame: 55.00
ENGINE, DIESEL: {Cummins X15 430 V} Productivity Series, EPA 2021, 430HP @ 1900 RPM, 1650 lb-ft Torque @ 950 RPM, 2000 RPM Governed Speed, 441 Peak HP (Max)
TRANSMISSION, AUTOMATIC: {Allison 4000 RDS} 5th Generation Controls, Close Ratio, 6-Speed with Double Overdrive, with PTO Provision, Less Retarder, Includes Oil Level Sensor, On/Off Highway
CLUTCH: Omit Item (Clutch & Control)
AXLE, FRONT NON-DRIVING: {Meritor MFS-14-143A} Wide Track, I-Beam Type, 14,600-lb Capacity
AXLE, REAR, TANDEM: {Meritor MT-40-14X-4DFR} Single Reduction, 40,000-lb Capacity, .433"(11mm) Wall Housing Thickness, R Wheel Ends Gear Ratio: 5.29
CAB: Conventional, Day Cab
TIRE, FRONT: (2) 315/80R22.5 Load Range L HAU 3 WT (CONTINENTAL), 480 rev/mile, 68 MPH, All-Position
TIRE, REAR: (8) 11R22.5 Load Range H HDR2+ (CONTINENTAL), 491 rev/mile, 75 MPH, Drive
SUSPENSION, REAR, TANDEM: {Hendrickson HMX EX 400} Walking Beam, 40,000-lb Capacity, 54" Axle Spacing, Rubber Springs, with Transverse Torque Rods, Rubber End Bushings
PAINT: Cab schematic 100LZ
 Location 1: 9219, Winter White (Std)
 Chassis schematic N/A

INTERNATIONAL®**Vehicle Specifications
2023 HX620 SBA (HX620)****August 05, 2022****Description**

Base Chassis, Model HX620 SBA with 205.00 Wheelbase, 136.00 CA, and 55.00 Axle to Frame.

AXLE CONFIGURATION

AXLE CONFIGURATION {Navistar} 6x4

Notes

: Pricing may change if axle configuration is changed.

ENGINE

ENGINE, DIESEL {Cummins X15 430 V} Productivity Series, EPA 2021, 430HP @ 1900 RPM, 1650 lb-ft Torque @ 950 RPM, 2000 RPM Governed Speed, 441 Peak HP (Max)

CARB EMISSION WARR COMPLIANCE for Cummins X15 Engines Less than or Equal to 500 HP

CARB IDLE COMPLIANCE Low NOx Idle Engine, Complies with California Clean Air Regulations; Includes "Certified Clean Idle" Decal on Hood

EMISSION, CALENDAR YEAR {Cummins X15} EPA, OBD and GHG Certified for Calendar Year 2022

RADIATOR Aluminum, Welded, Down Flow, Front to Back System, 1325 SqIn, with 806 SqIn Charge Air Cooler

Includes

: RADIATOR HOSES Premium, Rubber

FAN DRIVE {Horton Drivemaster} Two-Speed Type, Direct Drive, with Residual Torque Device for Disengaged Fan Speed

Includes

: FAN Nylon

AIR CLEANER Dual Element, with Integral Pre-Cleaner, Engine Mounted

ANTI-FREEZE Red, Extended Life Coolant; To -40 Degrees F/ -40 Degrees C, Freeze Protection

ENGINE CONTROL, REMOTE MOUNTED for X15 Engines

FAN DRIVE SPECIAL EFFECTS Fan Cooling Ring with Fan Shroud Effects, Engine Mounted

HOSE CLAMPS, RADIATOR HOSES {Gates} Shrink Band Type

RADIATOR DRAIN & FILL FITTING SPECIAL; To Vacuum Out or Fill the Cooling System from the Bottom of Radiator, for Use with Quick-Connect Radiator Drain Tool or Shop Coolant Evacuation-Fill System

TRANSMISSION

TRANSMISSION, AUTOMATIC {Allison 4000 RDS} 5th Generation Controls, Close Ratio, 6-Speed with Double Overdrive, with PTO Provision, Less Retarder, Includes Oil Level Sensor, On/Off Highway

ALLISON SPARE INPUT/OUTPUT for Rugged Duty Series (RDS) and Regional Haul Series (RHS), General Purpose Trucks, Construction, Package Number 223

NEUTRAL AT STOP Allison Transmission Shifts to Neutral When Service Brake is Depressed and Vehicle is at Stop; Remains in Neutral Until Service Brake is Released

OIL COOLER, AUTO TRANSMISSION {Modine} Remote Mounted; Not for use with Retarder

SHIFT CONTROL PARAMETERS {Allison} 3000 or 4000 Series Transmissions, Performance Programming

TRANSMISSION OIL Synthetic; 63 thru 76 Pints

TRANSMISSION SHIFT CONTROL Column Mounted Stalk Shifter, Not for Use with Allison 1000 & 2000 Series Transmission

CLUTCH

INTERNATIONAL®**Vehicle Specifications**
2023 HX620 SBA (HX620)**August 05, 2022****Description**

CLUTCH Omit Item (Clutch & Control)

REAR AXLES, SUSPENSIONS

AXLE, REAR, TANDEM (Meritor MT-40-14X-4DFR) Single Reduction, 40,000-lb Capacity, .433"(11mm) Wall Housing Thickness, R Wheel Ends . Gear Ratio: 5.29

SUSPENSION, REAR, TANDEM (Hendrickson HMX EX 400) Walking Beam, 40,000-lb Capacity, 54" Axle Spacing, Rubber Springs, with Transverse Torque Rods, Rubber End Bushings

TRANSVERSE TORQUE RODS (Hendrickson) TRAAX Rod, Transverse Only

FRONT AXLES

AXLE, FRONT NON-DRIVING (Meritor MFS-14-143A) Wide Track, I-Beam Type, 14,600-lb Capacity

FRONT SUSPENSIONS

SUSPENSION, FRONT, SPRING Parabolic Taper Leaf, Shackle Type, 16,000-lb Capacity, with Shock Absorbers

CABS, COWLS, BODIES

CAB Conventional, Day Cab

Includes

- : CAB REAR SUSPENSION Air
- : CLEARANCE/MARKER LIGHTS (5) LED Roof Mounted
- : COAT HOOK, CAB Located on Rear Wall, Centered Above Rear Window
- : CONSOLE, CENTER Includes Two Cup Holders and One Additional Storage Area
- : CONSOLE, OVERHEAD Molded Plastic with Dual Storage Pockets, Retainer Nets and CB Radio Pocket; Located Above Driver and Passenger
- : COURTESY LIGHT (2) Driver and Passenger Door Mounted
- : DOME LIGHT, CAB Rectangular, Door and Instrument Panel Mounted Switch Activated, Timed Theater Dimming, Center Mounted, Integral to Console
- : FLOOR COVERING Rubber, Black
- : GLASS, ALL WINDOWS Tinted
- : GRAB HANDLE, CAB INTERIOR (1) "A" Pillar Mounted, Passenger Side
- : GRAB HANDLE, CAB INTERIOR (4) "B" Pillar and Door Mounted, Two Each Side
- : READING LIGHT, CAB Located in Overhead Console
- : STORAGE POCKET, DOOR (2) Full Length, Driver and Passenger Door

ACCESS, CAB Aluminum, Driver & Passenger Sides, Two Steps per Door, for use with Day Cab or Sleeper Cab

AIR CONDITIONER with Integral Heater and Defroster

Includes

- : HOSE CLAMPS, HEATER HOSE Mubea Constant Tension Clamps

CAB INTERIOR TRIM Diamond, for Day Cab

FRESH AIR FILTER Attached to Air Intake Cover on Cowl Tray in Front of Windshield Under Hood

GAUGE CLUSTER Premium Level; English with English Electronic Speedometer

Includes

- : GAUGE CLUSTER DISPLAY: Base Level (3" Monochromatic Display), Premium Level (5" LCD Color Display); Odometer, Voltmeter, Diagnostic Messages, Gear Indicator, Trip Odometer, Total Engine Hours, Trip Hours, MPG, Distance to Empty/Refill for
- : GAUGE CLUSTER Speedometer, Tachometer, Engine Coolant Temp, Fuel Gauge, DEF Gauge, Oil Pressure Gauge, Primary and Secondary Air Pressure
- : WARNING SYSTEM Low Fuel, Low DEF, Low Oil Pressure, High Engine Coolant Temp, Low Battery Voltage (Visual and Audible), Low Air Pressure (Primary and Secondary)

INTERNATIONAL®**Vehicle Specifications**
2023 HX620 SBA (HX620)

August 05, 2022

Description

GAUGE, AIR CLEANER RESTRICTION {Filter-Minder} with Black Bezel, Mounted in Instrument Panel

GAUGE, OIL TEMP, AUTO TRANS for Allison Transmission

GAUGE, OIL TEMP, ENGINE

GRAB HANDLE, EXTERIOR (2) Chrome, Towel Bar Type, with Anti-Slip Rubber Inserts, for Cab Entry Mounted Left and Right Side at B-Pillar

INSTRUMENT PANEL Wing Panel

IP CLUSTER DISPLAY On Board Diagnostics Display of Fault Codes in Gauge Cluster

MIRROR, CONVEX, LOOK DOWN Right Side, Black, 6" x 10.5"

MIRRORS (2) C-Loop, Heated, Black Heads and Arms, 7.5" x 14" Flat Glass, Includes 7.5" x 7" Convex Mirrors, for 102" Load Width

Notes

: Mirror Dimensions are Rounded to the Nearest 0.5"

MIRROR, CONVEX, HOOD MOUNTED (2) Right and Left Sides, Black, 7.5" x 7"

MODESTY PANEL Painted

SEAT, DRIVER {ISRI} Series 300, Air Suspension, High Back, Vinyl, Single Chamber Lumbar, Inboard Armrest, Suspension Cover, Fore/Aft Isolator, Cushion Extension, Seat Tilt

SEAT, TWO-MAN PASSENGER {National} Mid Back, Fixed Back, Vinyl, with Under Seat Storage

WINDOW, POWER (2) and Power Door Locks, Left and Right Doors, Includes Express Down Feature

FRAMES

FRAME RAILS Heat Treated Alloy Steel (120,000 PSI Yield); 10.250" x 3.610" x 0.375" (260.4mm x 91.7mm x 9.5mm); 456.0" (11582mm) Maximum OAL

BUMPER, FRONT Contoured, Steel, Painted, Heavy Duty, for HX

CROSSMEMBER, REAR Relocated to End of Frame

TOW HOOK, FRONT (2) Frame Mounted; 80,000-lb. Total Capacity

WHEELBASE RANGE 191" (485cm) Through and Including 236" (600cm)

BRAKES

BRAKE SYSTEM, AIR Dual System for Straight Truck Applications

Includes

: BRAKE LINES Color and Size Coded Nylon

: PARKING BRAKE CONTROL Yellow Knob, Located on Instrument Panel

: PARKING BRAKE VALVE For Truck

: QUICK RELEASE VALVE On Rear Axle for Spring Brake Release: 1 for 4x2, 2 for 6x4

: SPRING BRAKE MODULATOR VALVE SR-7 with relay valve for 6x4/8x6

BRAKE, PARKING Manual Push-Pull Pneumatic Parking Brake

AIR BRAKE ABS {Bendix AntiLock Brake System} 4-Channel (4 Sensor/4 Modulator) Full Vehicle Wheel Control System

BRAKES, FRONT {Meritor 16.5X5 Q-PLUS CAST} Air S-Cam Type, Cast Spider, Fabricated Shoe, Double Anchor Pin, Size 16.5" X 5", 14,700-lb Capacity

BRAKE CHAMBERS, FRONT AXLE {Bendix} 20 SqIn

SLACK ADJUSTERS, FRONT {Gunite} Automatic

INTERNATIONAL®**Vehicle Specifications**
2023 HX620 SBA (HX620)**August 05, 2022****Description**

DUST SHIELDS, FRONT BRAKE for Air Cam Brakes

BRAKES, REAR {Meritor 16.5X8.625 Q-PLUS CAST} Air S-Cam Type, Cast Spider, Fabricated Shoe, Double Anchor Pin, Size 16.5" X 8.625", 23,000-lb Capacity per Axle

BRAKE CHAMBERS, REAR AXLE {Bendix EverSure} 30/30 Sqn Spring Brake

SLACK ADJUSTERS, REAR {Gunite} Automatic

PARK BRAKE CHAMBERS, ADDITIONAL (2) Spring Brake Type

DUST SHIELDS, REAR BRAKE for Air Cam Brakes

AIR COMPRESSOR {Cummins} 18.7 CFM

AIR DRYER {Bendix AD-HF} with Heater, Includes Pressure Protection Circuits, Safety Valve, Integral Purge Tank, Governor Pressure Settings 110 psi Cut-In/130 psi Cut-Out, Integrated PuraGuard Coalescing Filtration

AIR DRYER LOCATION Mounted Inside Left Rail, Back of Cab

AIR TANK LOCATION (2) : One Mounted Under Each Rail, Front of Rear Suspension, Parallel to Rail

DRAIN VALVE (2) {Berg} with Pull Chains, for Air Tanks

TRAILER CONNECTIONS Four-Wheel, with Hand Control Valve and Tractor Protection Valve, for Straight Truck

STEERING

STEERING GEAR (2) {Sheppard M100/M80} Dual Power

STEERING COLUMN Tilting and Telescoping

STEERING WHEEL 4-Spoke; 18" Dia., Black

DRIVELINES

DRIVELINE SYSTEM {Dana Spicer} SPL250 Main Driveline with SPL170 Interaxle Shaft, for 6x4

EXHAUST SYSTEMS

EXHAUST SYSTEM Horizontal Aftertreatment System, Frame Mounted Right Side Under Cab, for Single Vertical Tail Pipe, Cab Mounted Right Side

AFTERTREATMENT COVER Aluminum

ENGINE COMPRESSION BRAKE {Cummins} Interbrake For Cummins Signature/ISX/X15 Engines; Furnished with Engine

EXHAUST HEIGHT 11' 6"

MUFFLER/TAIL PIPE GUARD (1) Aluminum

TAIL PIPE (1) Turnback Type

ELECTRICAL SYSTEMS

ELECTRICAL SYSTEM 12-Volt, Standard Equipment

Includes

: HAZARD SWITCH Push On/Push Off, Located on Instrument Panel to Right of Steering Wheel

: HEADLIGHT DIMMER SWITCH Integral with Turn Signal Lever

: PARKING LIGHT Integral with Front Turn Signal and Rear Tail Light

: STARTER SWITCH Electric, Key Operated

: STOP, TURN, TAIL & B/U LIGHTS Dual, Rear, Combination with Reflector

: WINDSHIELD WIPER SWITCH 2-Speed with Wash and Intermittent Feature (5 Pre-Set Delays), Integral with Turn Signal Lever

INTERNATIONAL®**Vehicle Specifications
2023 HX620 SBA (HX620)****August 05, 2022****Description**

: WINDSHIELD WIPERS Single Motor, Electric, Cowl Mounted

ALTERNATOR {Leece-Neville AVI160P2013} Brush Type, 12 Volt, 160 Amp Capacity, Pad Mount

ANTENNA for Increased Roof Clearance Applications

BATTERY BOX Aluminum, with Plastic Cover, 18" Wide, 2-4 Battery Capacity, Mounted Right Side Back of Cab

BATTERY SYSTEM {Fleetrite} Maintenance-Free, (3) 12-Volt 1980CCA Total, Top Threaded Stud

BODY BUILDER WIRING Rear of Frame; Includes Sealed Connectors for Tail/Amber Turn/Marker/ Backup/Accessory Power/Ground and Sealed Connector for Stop/Turn

CB RADIO Omit Power Feeds, Power Source and Wiring

CIRCUIT BREAKERS Manual-Reset (Main Panel) SAE Type III with Trip Indicators, Replaces All Fuses

ELECTRIC TRAILER BRAKE/LIGHTS Accommodation Package to Rear of Frame; for Combined Trailer Stop, Tail, Turn, Marker Light Circuits; Includes Electric Trailer Brake Accommodation Package with Cab Connections for Mounting Customer Installed Electric Brake Unit, Less Trailer Socket

HEADLIGHT WARNING BUZZER Sounds When Head Light Switch is on and Ignition Switch is in "Off" Position

HEADLIGHTS Halogen

HEADLIGHTS ON W/WIPERS Headlights Will Automatically Turn on if Windshield Wipers are turned on

HORN, AIR Single, Located Under Cab

HORN, ELECTRIC Disc Style

POWER SOURCE, ADDITIONAL Auxiliary Power Outlet (APO) with USB Port, Located in the Instrument Panel

RADIO AM/FM/WB/Clock/Bluetooth/USB Input/Auxiliary Input

SPEAKERS (2) 6.5" Dual Cone Mounted in Doors

STARTING MOTOR {Mitsubishi Electric Automotive America 105P} 12-Volt, with Soft-Start

STOP, TURN, TAIL & B/U LIGHTS {Weldon} Multi-Function LED Lamp, Mounted Outside Rails, Includes LED License Plate Light

TEST EXTERIOR LIGHTS Pre-Trip Inspection will Cycle all Exterior Lamps Except Back-up Lights

TRAILER AUXILIARY FEED CIRCUIT for Electric Trailer Brake Accommodation/Air Trailer ABS; with 30 Amp Fuse and Relay, Controlled by Ignition Switch

TURN SIGNAL SWITCH Self-Canceling

WINDSHIELD WIPER SPD CONTROL Force Wipers to Slowest Intermittent Speed When Park Brake Set and Wipers Left on for a Predetermined Time

FRONT END

FRONT END Tilting, Composite

FENDER EXTENSIONS Rubber

GRILLE Black Vertical Accent Bars, with Black Mesh

LOGOS EXTERIOR Model Badges

LOGOS EXTERIOR, ENGINE Badges

SPEEDOMETER, TOOLS, MISC

COMMUNICATIONS MODULE Telematics Device with Over the Air Programming; Includes Five Year Data Plan and International 360

INTERNATIONAL®**Vehicle Specifications**
2023 HX620 SBA (HX620)**August 05, 2022****Description**

PAINT SCHEMATIC, PT-1 Single Color, Design 100

PAINT TYPE Base Coat/Clear Coat, 1-2 Tone

FUEL TANKS

FUEL TANK Non-Polished Aluminum, 24" Dia, 60 US Gal (227L), Mounted Left Side, Under Cab

DEF TANK 10.6 US Gal (40L) Capacity, Frame Mounted Outside Left Rail, Under Cab

FUEL HEATER (Cummins) Omit Plumbing for TRV on Cummins Engines

FUEL/WATER SEPARATOR {Racor} Fuel Pre-Filter and Filter Base, Includes Water-In-Fuel Sensor

WHEELS, TIRES - FRONT

WHEELS, FRONT {Accuride 29039} DISC; 22.5x9.00 Rims, Powder Coat Steel, 5-Hand Hole, 10-Stud, 285.75mm BC, Hub-Piloted, Flanged Nut, with Steel Hubs, Non-Standard Offset, with .5" Thick Disc

(2) TIRE, FRONT 315/80R22.5 Load Range L HAU 3 WT (CONTINENTAL), 480 rev/mile, 68 MPH, All-Position

WHEELS, TIRES - REAR

WHEELS, REAR {Accuride 29169} DUAL DISC; 22.5x8.25 Rims, Powder Coat Steel, 5-Hand Hole, 10-Stud, 285.75mm BC, Hub-Piloted, Flanged Nut, with .472" Thick Increased Capacity Disc and Steel Hubs

(8) TIRE, REAR 11R22.5 Load Range H HDR2+ (CONTINENTAL), 491 rev/mile, 75 MPH, Drive

BODY INTEGRATION

BDY INTG, REMOTE POWER MODULE Mounted Inside Cab Behind Driver Seat, Up to 6 Outputs & 6 Inputs, Max 20 amp per Channel, Max 80 amp Total; Includes 1 Switch Pack with Latched Switches

BDY INTG, INDICATOR LIGHTS (2) 1 for Body Up, 1 for Gate Open, Includes Audible Alarm, Programmable Mode for Various Switch Actions. (Requires 2 Remote Power Module Inputs)

Services Section:**WARRANTY**

WARRANTY Standard for HX520, HX620, Effective with Vehicles Built January 1, 2021 or Later, CTS-2015B

Body/Allied Equipment**Description**

Enoven installed dump body

Goods Purchased**Description**



Enoven Truck Body + Equipment

Quote #: 81223 ^{Item 6}

2904 Duluth St
West Sacramento, CA 95691
916-372-9692

Date: 8/5/2022
CustID: 31637

Thank you for the opportunity to quote your business, please call if you have any questions.

American River FCD
185 Commerce Circle
Suite D
Sacramento, CA 95815

American River FCD
185 Commerce Circle
Suite D
Sacramento, CA 95815

Attn: Ross Kawamura
916-708-7017
ross@arfed.org

Qty>=	Description	Unit Price	Ext Price
1	<p>Dump Body: 15', BeauRoc DH, 15-3642-HL</p> <p>(REQUIRES 132" C/T)</p> <ul style="list-style-type: none"> - 11 to 13 cu.yd. - Floor: 1/4" HARDOX 450 with 8" X 3/16" formed trapezoidal long sills, NO CROSSMEMBERS - Sides: 36" tall, 3/16" HARDOX 450 with 3" X 4" X 1/4" tubing top rail, pressed horizontal brace, and full length fender <ul style="list-style-type: none"> - 2" X 6" wood cheater boards installed - Fold down ladder at front corner, driver side, and at rear corner, passenger side - (12) tarp hooks mounted under mid rail, (6) per side - Headsheet: 68" tall, 3/16" HARDOX 450 with 24" X 3/16" cab shield <ul style="list-style-type: none"> - Tool holders mounted to front of headboard, one per side - ECCO 5585A 15" Amber LED Mini-Lightbar mounted to riser bracket on cab shield with 1" X 1" tubing guard wired to OEM "BEACON LAMP" dash switch - Tailgate: 42" tall, 1/4" HARDOX 450 with pressed horizontal brace, Air Release and Internal Air Highlift wired to switches in console with RED safety covers <ul style="list-style-type: none"> - 8" bolt on spreader apron with spreader chains - 2.5" Red LED Clearance lamps at top of rear posts <ul style="list-style-type: none"> - (2) ECCO 3965A Amber LED Strobe lamps at top of rear posts wired to OEM "STROBE LAMP" dash switch - 6" LED S/T/T and B/U lamps in rear posts - 2.5" Red LED Marker lamps in sides of rear posts - OEM S/T/T/BU lamps at end of frame - Red LED ID Lamp Bar mounted to top of hitch plate <ul style="list-style-type: none"> - LED License Plate lamp mounted to hitch plate - Front trunnion mounted, base lift Mailhot G3 135-5.7-3 telescopic cylinder giving 45 tons lifting capacity at 50 degree dump angle with 12" overhang <ul style="list-style-type: none"> - Hotshift PTO wired to OEM dash switch with direct mount dump pump - Cable dump controls mounted between seats in cab - 25gal steel hydraulic reservoir with internal 	\$42,937.00	\$42,937.00

Qty>=	Description	Unit Price	Ext Price
	<ul style="list-style-type: none"> return line filter mounted to frame rail, driver side - Body up lamp in dash - Body prop - Back up alarm - "ENOVEN" mud flaps aft of tires with front plastic splash guards - (2) ECCO 3706A Amber LED Strobe lamps mounted in front grill wired to OEM "STROBE LAMP" dash switch - Painted Black - Installed, Weighed, and Certified 		
1	Accessories: 5/8" Buck Plate with Hitch	\$2,739.00	\$2,739.00
	<ul style="list-style-type: none"> - 45ton Air Pintle Hitch (Customer to Specify Height) - (2) 1" D-Rings - 7-Way ABS Round Pin Trailer Socket mounted to top left of plate - 7-way Flat Pin Trailer Socket mounted to top passenger side of plate wired to Tekonsha Prodigy electric brake controller mounted in cab - Glad Hands split mounted to top of plate, Red on left and Blue on right - Red LED ID Lamp Bar mounted to top center of plate - LED License Plate lamp mounted to top of plate - Integrated underride protection, as needed - Painted Black 		
1	Accessories: Pull Tarps Electric Tarping System	\$4,140.00	\$4,140.00
	<ul style="list-style-type: none"> - SuperShield enclosure mounted to top of headboard - HD Mesh Tarp with grommets - Steel arms attached to sides of body - Second arm kit - Switch in cab 		
1	Accessories: Toolbox, 36"	\$979.00	\$979.00
	<ul style="list-style-type: none"> - 36" X 18" X 18" steel toolbox mounted to frame rail, passenger side - Powdercoated Black - SSTL spring toolholder mounted to top of toolbox 		
1	Accessories: Cone Holder	\$490.00	\$490.00
	<ul style="list-style-type: none"> - Post style coneholder mounted to frame rail, driver side aft of hydraulic tank - Painted Black 		

Qty>= Description

Unit Price

Item #
Ext Price

TOTAL

\$51,285.00

This Quote is good for 30 days. Acceptance of this Quote is confirmed and accepted by issuance of a Purchase Order, signing and returning this Quote, and/or delivery of a truck chassis to Enoven. This quotation was made expressly upon your request and is confidential and non transferable. If provided, estimated delivery dates are estimates only; actual delivery dates depend on a variety of factors that may/may not be within the direct control of Enoven. FUEL SERVICE CHARGE - IF A TRUCK IS DELIVERED WITH LESS THAN 1/4 TANK OF DIESEL/GASOLINE OR LESS THAN 1,500PSI CNG, A \$100.00 FUEL SERVICE CHARGE WILL BE ADDED TO THE FINAL INVOICE. For complete Terms and Conditions please go to www.enoven.com.

Terms of Sale:

Net10

Enoven Truck Body + Equipment

Authorized by: senochian

Date: 8/5/2022

Printed: 8/5/2022 12:49:55 PM

General Manager's Meeting Summary

August 2022

8/4: Steelhead Creek Annual Clean-up Planning meeting. I met with staff from the Regional Water Quality Control Board, City of Sacramento Parks, and Reclamation District 1000 to discuss this year's annual Steelhead Creek clean-up effort. The outreach will begin in early October with a coordinated clean-up to commence shortly thereafter.

8/4: USACE Erosion O&M meeting. I met with staff from the US Army Corps of Engineers, DWR, and SAFCA to discuss the operation and maintenance requirements for soon to be constructed bank protection features and on-site mitigation along the American River.

8/11: DWR/SAFCA Erosion O&M meeting. I met with staff from DWR, and SAFCA to discuss the operation and maintenance requirements for soon to be constructed bank protection features and on-site mitigation along the American River.

8/12: American River Flood Control District Board of Trustees meeting. The Board met in regular session. The agenda items included a Closed Session item for the annual GM Review and a proposal to split the cost of a shared boundary survey with the neighborhood association in Campus Commons.

8/18: CVFPB Permitting and Inspection Site Visit. I met with staff from the Central Valley Flood Protection Board Permitting and Inspection Section and District consultant Pro Mitra to tour the construction site and describe the construction methodology and sequencing. Members of the site visit all liked the temporary ramp constructed to allow access to the waterside slope for equipment and the ability to retain the ramp was discussed.

8/24: USACE Erosion O&M meeting. I met with staff from the US Army Corps of Engineers, DWR, and SAFCA to discuss the operation and maintenance requirements for soon to be constructed bank protection features and on-site mitigation along the American River.

8/30: Arcade Creek Erosion Repairs Site Visit. I met with staff from MBK Engineers to provide a tour of the Arcade Creek Erosion Repairs. The permitting work to retain the temporary construction ramp was discussed.