



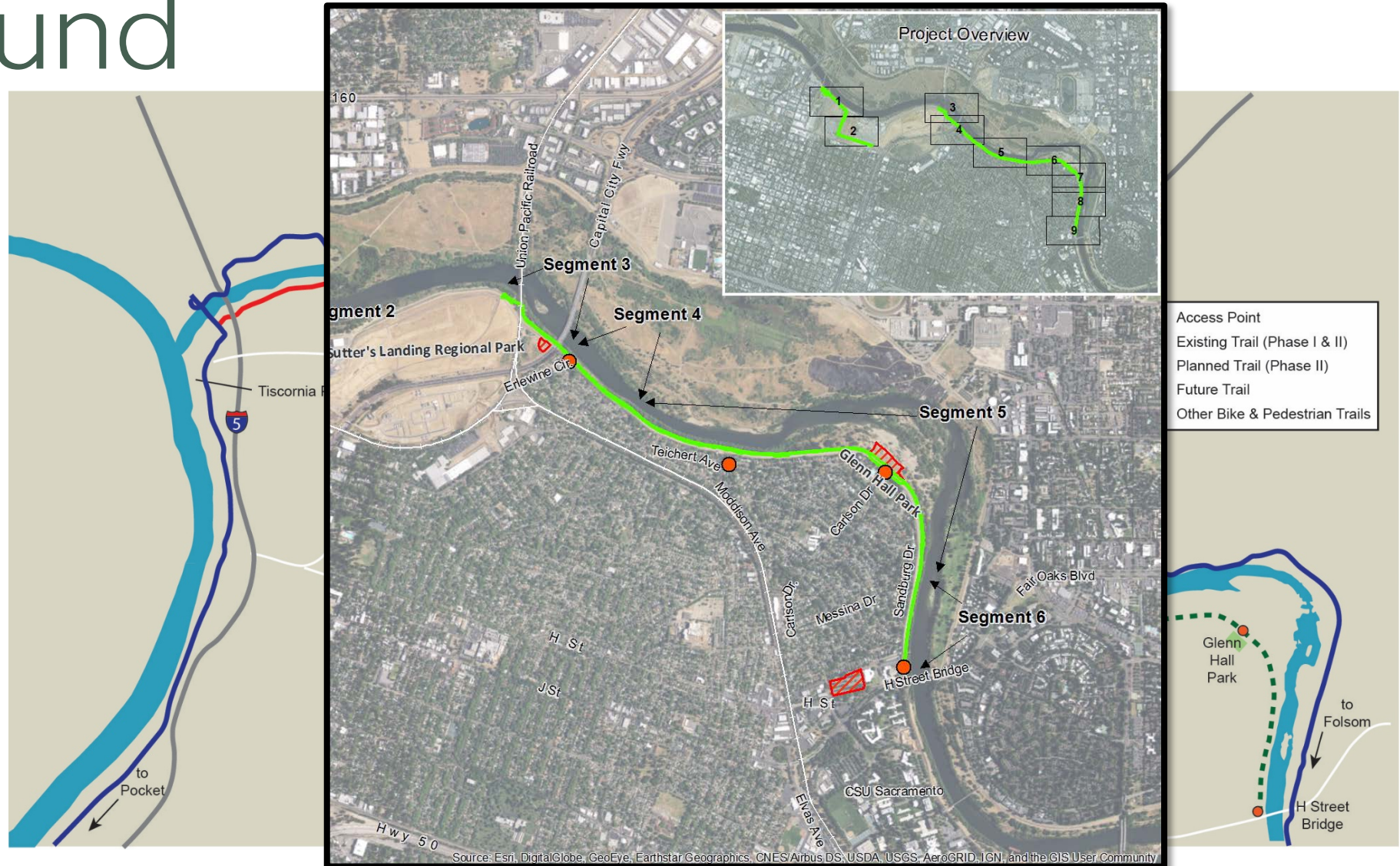
Two Rivers Trail (phase II)

Adam Randolph
City of Sacramento



Background

- Project Limits
- Trail Segments



Location



Variance Request

- “Infeasibility”
 - Difficult Permitting Process
 - Difficult Enviro Process
 - Against CCR Title 23
 - Higher Biological Impacts
 - Complex Construction
 - Higher Costs
 - Longer Construction

RECREATIONAL TRAILS POLICY

The American River Flood Control District is responsible for operating and maintaining

Layout of Trail. In designing the recreation trail system, the applicant shall include the following standards:

- a.) The District's preference is to locate trails off the levee crown on either the land or waterside of the levee, where feasible, in accordance with the State Reclamation Board regulations. If not feasible, or if the applicant desires to locate the trail on the crown for other reasons, the Board may approve locating the trail along the crown on a case-by-case basis. If approved, the District will still require stretches of the trail along a levee segment to be located off the crown for a reasonable distance (200 to 300 feet). This provides for the extended storage of material and equipment by the District to facilitate levee maintenance without impacting trail usage. Varying the trail between the crown and land or waterside levee toes most easily accommodates this. The Board may grant variances on a case-by-case basis.

Permit

- The City agrees with the intent of the District's conditions.
- Give Staff authority to execute the final permit.